

CUSTOMER DRAWING

REV.	DESCRIPTION	DATE	DRAWN	CHECK	APPROVE
J	ECN97013	02/25/08'	Denice	Ren	Peter
K	ECN97029	09/09/08'	Denice	Ren	Peter

ORDERING INFORMATION

LM004 OXX H TX 2 X

① ② ③ ④ ⑤ ⑥

① PRODUCT SERIES

1.0 WIRE TO BOARD CONNECTOR
SIDE ENTRY SMT TYPE

② NUMBER OF CONTACTS

SEE DIM. TABLE

③ INSULATOR TYPE

BLANK: NON-HALOGEN FREE
H: HALOGEN FREE

④ CONTACT PLATING

TF: LEAD FREE BRIGHT PLATED
(UNDER 90 PPM)
TF1: LEAD FREE MATTE PLATED
(UNDER 90 PPM)
G21: Au (3u") PLATED
G22: Au (5u") PLATED
G24: Au (1u") PLATED

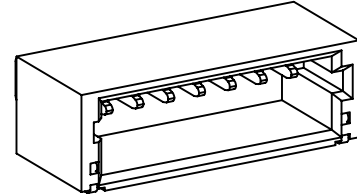
⑤ PACKING METHOD

1: TRAY
2: TUBE
3: TAPE/REEL

⑥ BOM CODE

IDENTIFY BY UNICORN

INFORMATION ONLY

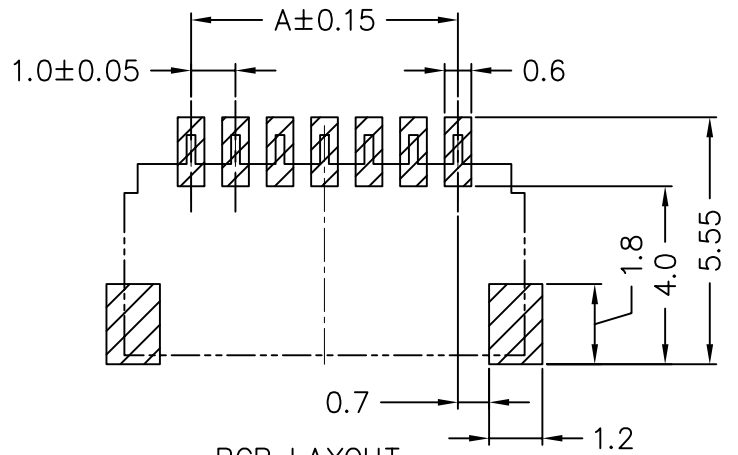


PERFORMANCE CHARACTERISTICS

Operating Voltage: 50V AC/DC Max.
Current Rating: 1 Amp Max.
Contact Resistance: 20 mΩ Max.
Insulation Resistance: 100 MΩ Min.
Dielectric Withstanding Voltage: 500 VAC RMS.
Operating Temperature: -25°C TO +85°C

MATERIAL

Insulator: High Temperature Thermoplastic;
UL94V-0 Rated
Terminal: Copper Alloy
Plating: SEE ORDERING INFORMATION



PCB LAYOUT
(UNLESS TOLERANCE: 0.10)

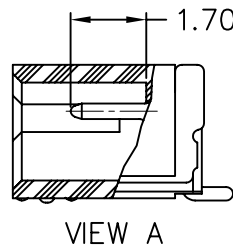
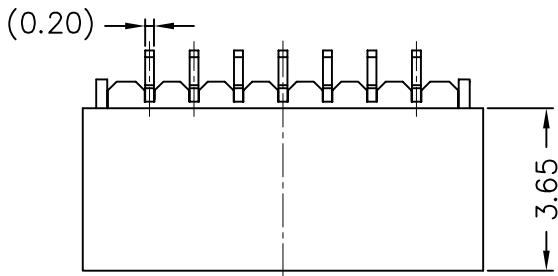
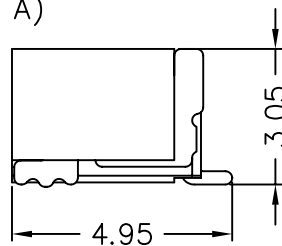
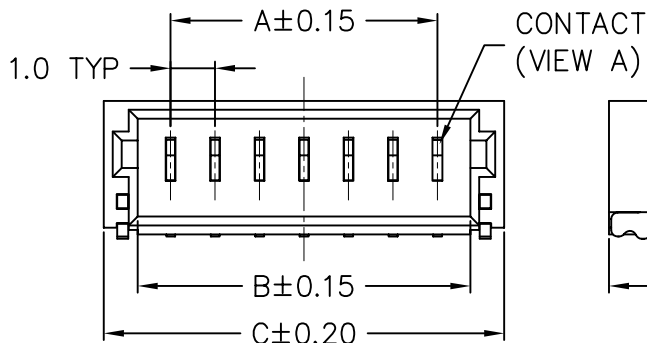


TABLE OF DIMENSION

NO. OF POSITION	Dimensions		
	A	B	C
2P	1.00	2.48	4.00
3P	2.00	3.48	5.00
4P	3.00	4.48	6.00
5P	4.00	5.48	7.00
6P	5.00	6.48	8.00
7P	6.00	7.48	9.00
8P	7.00	8.48	10.00
9P	8.00	9.48	11.00
10P	9.00	10.48	12.00
11P	10.00	11.48	13.00
12P	11.00	12.48	14.00
13P	12.00	13.48	15.00
14P	13.00	14.48	16.00
15P	14.00	15.48	17.00
16P	15.00	16.48	18.00
17P	16.00	17.48	19.00
18P	17.00	18.48	20.00
19P	18.00	19.48	21.00
20P	19.00	20.48	22.00



TOLERANCE (UNLESS SPECIFIED)

0.0	±0.35
0.00	±0.20
0.000	±0.XX



UNICORN
ELECTRONICS
COMPONENTS

TITLE:
1.0 WIRE TO BOARD CONNECTOR
SIDE ENTRY SMT TYPE (WAFER)

DWG NO.
LM004_C
FILE PATH
LM004\LM004_CK

SERIES
LM

SHEET
1/1
REV.
K