

CUSTOMER DRAWING

ORDERING INFORMATION

LM123S 010 H TF1 3 Y

① ② ③ ④ ⑤ ⑥

① PRODUCT SERIES

1.25 WIRE TO BOARD CONN.
LOW PROFILE R/A SMT TYPE

② NUMBER OF CONTACTS

2 TO 10

③ INSULATOR TYPE

BLANK: NON-HALOGEN FREE
H: HALOGEN FREE

④ CONTACT PLATING

TF: LEAD FREE BRIGHT PLATED
(UNDER 90 PPM)
TF1: LEAD FREE MATTE PLATED
(UNDER 90 PPM)

⑤ PACKING METHOD

3: TAPE & REEL

⑥ BOM CODE

IDENTIFY BY UNICORN

PERFORMANCE CHARACTERISTICS

OPERATING VOLTAGE: 150VAC MAX.
CURRENT RATING: 1 A MAX.
CONTACT RESISTANCE: 30 mΩ MAX. (AFTER TEST)
INSULATION RESISTANCE: 500 MΩ MIN.
DIELECTRIC WITHSTANDING VOLTAGE: 500V AC/MINUTE
OPERATING TEMPERATURE: -25°C TO +85°C

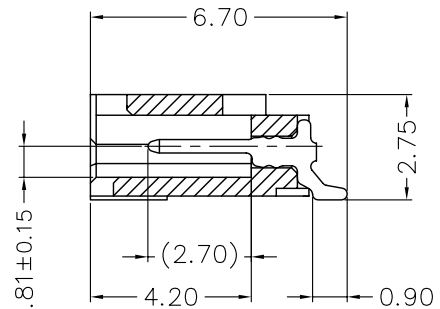
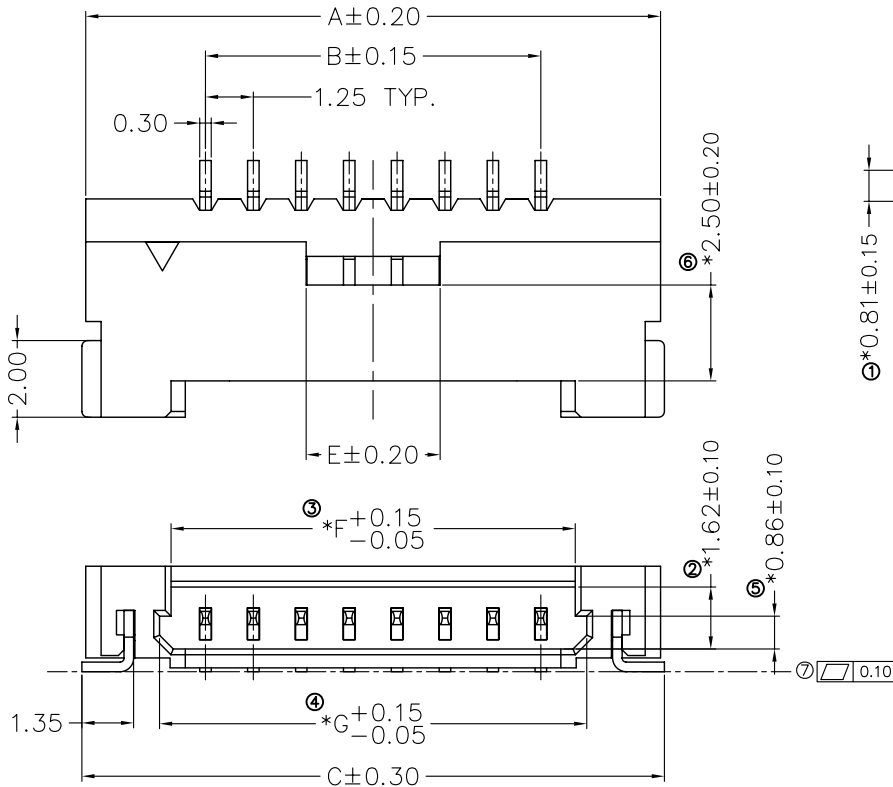
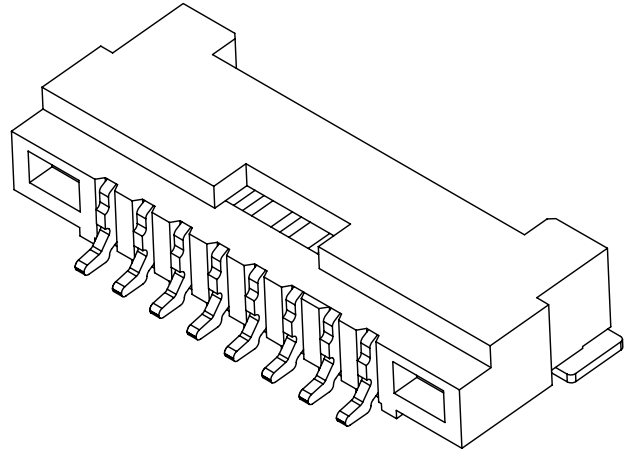
MATERIALS

HOUSING: HIGH TEMPERATURE THERMOPLASTIC,
UL94V-0 RATED.
CONTACT: COPPER ALLOY
HOLD DOWN: COPPER ALLOY

PLATING

CONTACT: SEE ORDERING INFORMATION
HOLD DOWN: PURE-TIN PLATED, NICKEL UNDERPLATED OVER ALL.

REV.	DESCRIPTION	DATE	DRAWN	CHECKED	APPROVED
F	ECN100003	2011.05.24	Denice	Ren	Peter
G	FOR CUSTOMER	2011.08.25	Denice	Ren	Peter
H	FOR CUSTOMER	2013.02.23	Denice	Ren	Peter
I	ADD DIM. 7	2013.06.06	Denice	Ren	Peter



SECTION

TOLERANCE (UNLESS SPECIFIED)
0.0 ±0.35
0.00 ±0.20
0.000 ±0.05

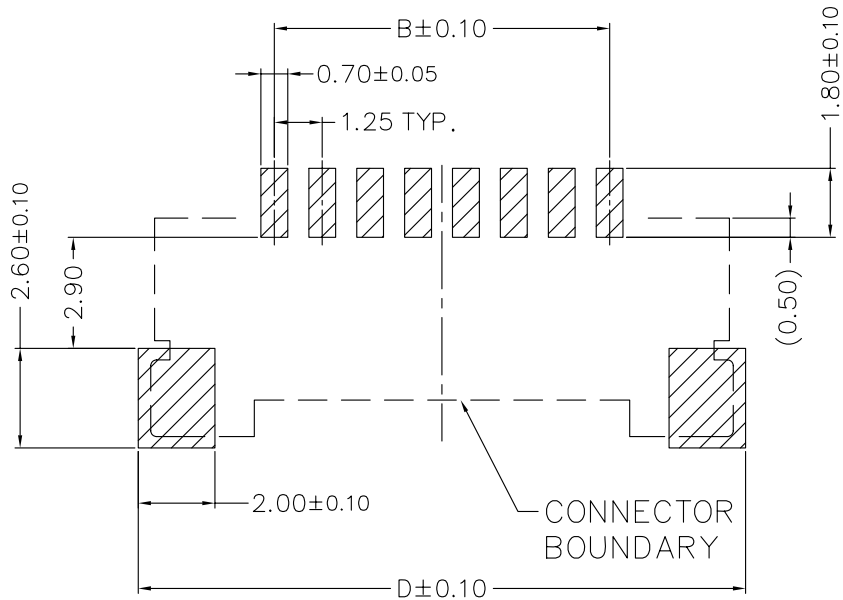


TITLE:
1.25 WIRE TO BOARD CONN.
LOW PROFILE SMT R/A TYPE

DWG NO.	SERIES	SHEET
LM123S_C	LM123S	1 / 2
FILE PATH	REV.	
LM123S\LM123S_CI	I	

CUSTOMER DRAWING

REV.	DESCRIPTION	DATE	DRAWN	CHECKED	APPROVED
F	ECN100003	2011,05,24	Denice	Ren	Peter
G	FOR CUSTOMER	2011,08,25	Denice	Ren	Peter
H	FOR CUSTOMER	2013,02,23	Denice	Ren	Peter
I	ADD DIM. 7	2013,06,06	Denice	Ren	Peter



RECOMMEND PCB LAYOUT

TABLE OF DIMENSION

POS.	Dimensions						
	A	B	C	D	E	F	G
2P	7.50	1.25	7.70	8.35	3.50	3.05	3.65
3P	8.75	2.50	8.95	9.60		4.30	4.90
4P	10.00	3.75	10.20	10.85		5.55	6.15
5P	11.25	5.00	11.45	12.10		6.80	7.40
6P	12.50	6.25	12.70	13.35		8.05	8.65
7P	13.75	7.50	13.95	14.60		9.30	9.90
8P	15.00	8.75	15.20	15.85		10.55	11.15
9P	16.25	10.00	16.45	17.10		11.80	12.40
10P	17.50	11.25	17.70	18.35		13.05	13.65



TOLERANCE
(UNLESS SPECIFIED)
0.0 ±0.35
0.00 ±0.20
0.000 ±0.XX



UNICORN
ELECTRONICS
COMPONENTS

TITLE:
1.25 WIRE TO BOARD CONN.
LOW PROFILE SMT R/A TYPE
5

DWG NO.
LM123S_C
FILE PATH
LM123S\LM123S_CI

SERIES
LM123S

SHEET
2 / 2
REV.
I