

CUSTOMER DRAWING

REV.	DESCRIPTION	DATE	DRAWN	CHECK	APPROVE
E	ECN97018	04/01/08'	Denice	Ren	Peter
F	ECN97046	11/21/08'	Denice	Ren	Peter

ORDERING INFORMATION

LM212 010 H TX 2 X
 ① ② ③ ④ ⑤ ⑥

① PRODUCT SERIES

1.5 WIRE TO BOARD CONN.
 SIDE ENTRY SMT TYPE

② NUMBER OF CONTACTS

SEE DIM. TABLE

③ INSULATOR TYPE

BLANK: NON-HALOGEN FREE
 H: HALOGEN FREE

④ CONTACT PLATING

TF: LEAD FREE BRIGHT PLATED
 (UNDER 90 PPM)
 TF1: LEAD FREE MATTE PLATED
 (UNDER 90 PPM)

⑤ PACKING METHOD

1: TRAY
 2: TUBE
 3: TAPE/REEL

⑥ BOM CODE

IDENTIFY BY UNICORN

INFORMATION ONLY

PERFORMANCE CHARACTERISTICS

Operating Voltage: 50V AC/DC Max.
 Current Rating: 1 Amp Max.
 Contact Resistance: 20 m Max.
 Insulation Resistance: 500 MΩ Min.
 Dielectric Withstanding Voltage: 500 VAC RMS.
 Operating Temperature: -25°C TO +85°C

MATERIAL

Insulator: High Temperature Thermoplastic,
 UL94V-0 Rated
 Terminal: Copper Alloy
 Plating: SEE ORDERING INFORMATION

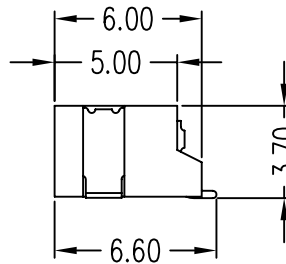
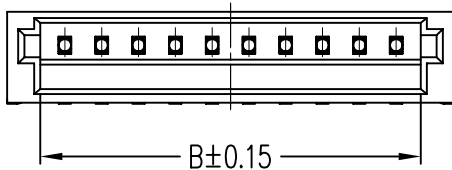
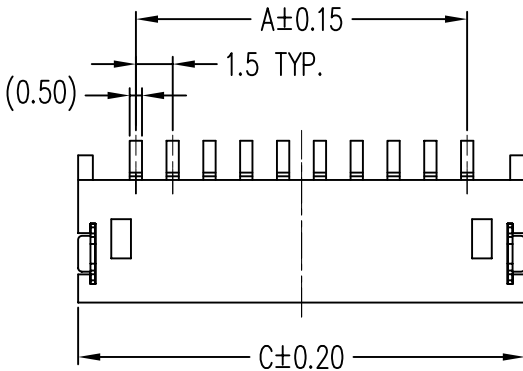
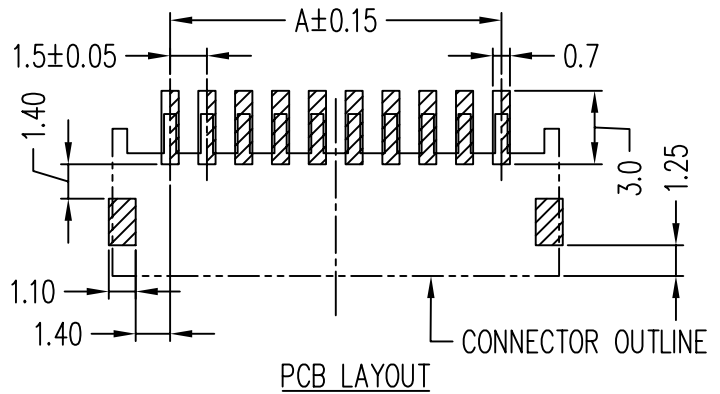


TABLE OF DIMENSION

NO. of Pins	Dimensions		
	A	B	C
2P	1.50	3.60	6.00
3P	3.00	5.10	7.50
4P	4.50	6.60	9.00
5P	6.00	8.10	10.50
6P	7.50	9.60	12.00
7P	9.00	11.10	13.50
8P	10.50	12.60	15.00
9P	12.00	14.10	16.50
10P	13.50	15.60	18.00
11P	15.00	17.10	19.50
12P	16.50	18.60	21.00
13P	18.00	20.10	22.50
14P	19.50	21.60	24.00
15P	21.00	23.10	25.50
20P	28.50	30.60	33.00



TOLERANCE
 (UNLESS SPECIFIED)
 0.0 ±0.35
 0.00 ±0.20
 0.000 ±0.XX



UNICORN
 ELECTRONICS
 COMPONENTS

TITLE:
 1.5 WIRE TO BOARD
 SIDE ENTRY SMT TYPE (WAFER)

DWG NO.
 LM212_C
FILE PATH
 LM212\LM212_CF

SERIES
 LM
SHEET
 1/1
REV.
 F