

CUSTOMER DRAWING

REV.	DESCRIPTION	DATE	DRAWN	CHECKED	APPROVED
A	NEW VERSION	11-NOV-08	Denice	Deming	Peter

ORDERING INFORMATION

SAR40 A 22 G6F1 1

① ② ③ ④ ⑤

① **PRODUCT SERIES**

SATA 7+15P RECEPTACLE
3.5H R/A REVERSE SMT TYPE

② **MATING HEIGHT**

A: PCB=1.6mm(t)

③ **NUMBER OF CONTACTS**

22P

④ **CONTACT PLATING**

G6F1: GOLD(15u") PLATING ON CONTACT AREA
MATTE-TIN (100u") ON SOLDER AREA
NICKEL (50u") UNDERPLATED OVER ALL.
(LEAD FREE UNDER 90 PPM)

⑤ **PACKING METHOD**

1: TRAY

PERFORMANCE CHARACTERISTICS

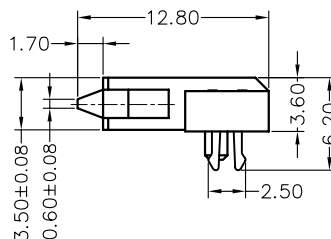
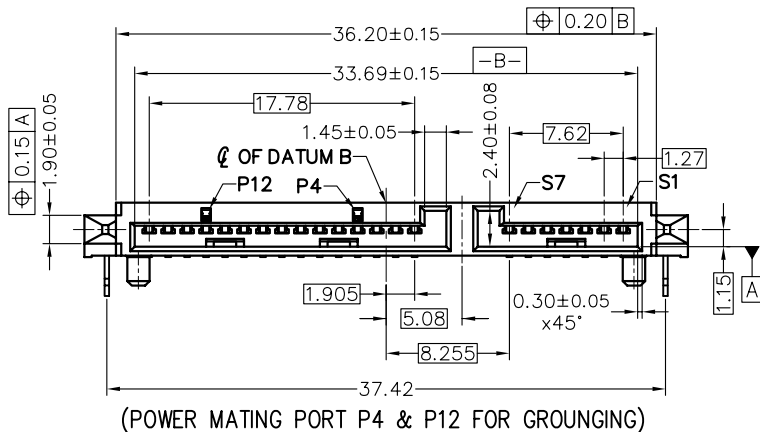
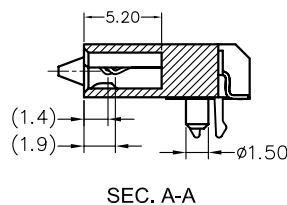
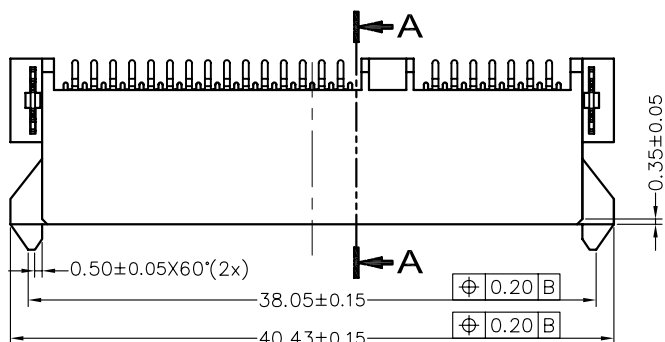
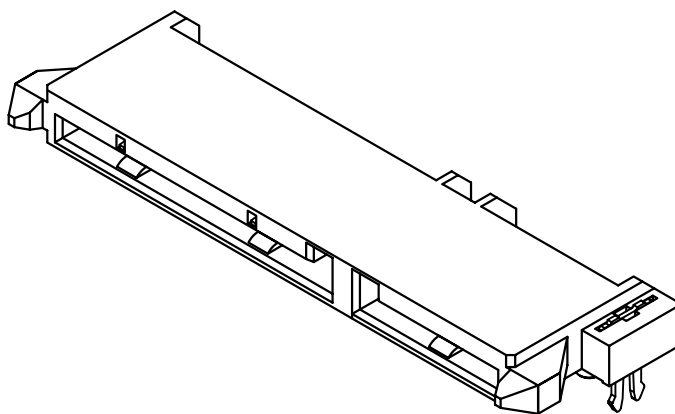
OPERATING VOLTAGE: 15V DC MAX.
CURRENT RATING: 1.5 A MAX.
CONTACT RESISTANCE: 30 mΩ MAX.
INSULATION RESISTANCE: 1000 MΩ MIN.
DIELECTRIC WITHSTANDING VOLTAGE: 500V AC/MINUTE
OPERATING TEMPERATURE: -45°C TO +85°C

MATERIALS

HOUSING: HIGH TEMPERATURE THERMOPLASTIC,
UL94V-0 RATDE
HOUSING COLOR: BLACK
CONTACT: PHOSPHOR BRONZE
BOARD LOCK: BRASS

MATERIALS

CONTACT: SEE ORDERING INFORMATION
BOARD LOCK: MATTE-TIN (100u" MIN.)
NICKEL (50u" MIN) UNDERPLATED OVER ALL.



(POWER MATING PORT P4 & P12 FOR GROUNDING)

TOLERANCE (UNLESS SPECIFIED)
0.0 ±0.35
0.00 ±0.20
0.000 ±0.XX

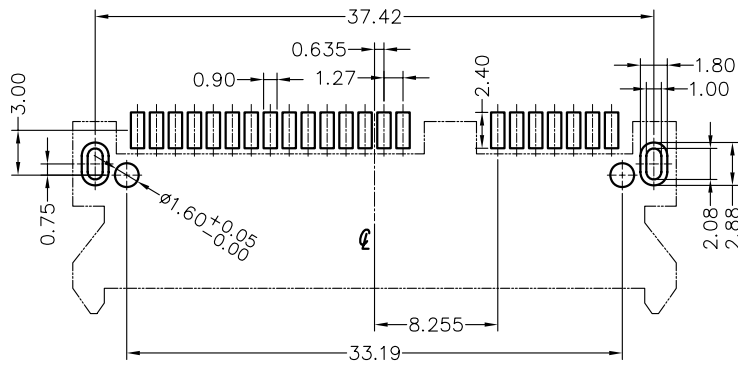
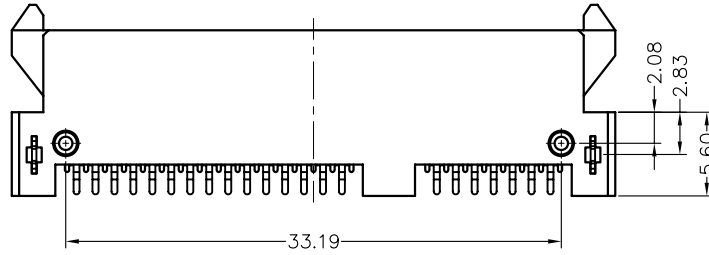


TITLE:
SATA 7+15P RECEPTACLE
3.5H R/A REVERSE SMT TYPE

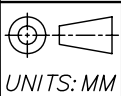
DWG NO.	SERIES	SHEET
SAR40A_C	SAR40	1/2
FILE PATH	REV.	
SATA\SAR40\SAR40A_CA	A	

CUSTOMER DRAWING

REV.	DESCRIPTION	DATE	DRAWN	CHECKED	APPROVED
A	NEW VERSION	11-NOV-08	Denice	Deming	Peter



RECOMENED PCB LAYOUT(T=1.6mm)
PCB TOLERANCE:±0.05



TOLERANCE (UNLESS SPECIFIED)	
0.0	±0.35
0.00	±0.20
0.000	±0.XX



UNICORN
ELECTRONICS
COMPONENTS

TITLE:
SATA 7+15P RECEPTACLE
3.5H R/A REVERSE SMT TYPE

DWG NO.
SAR40A_C
SERIES
SAR40
FILE PATH
SATA\SAR40\SAR40A_CA

SHEET
2/2
REV.
A