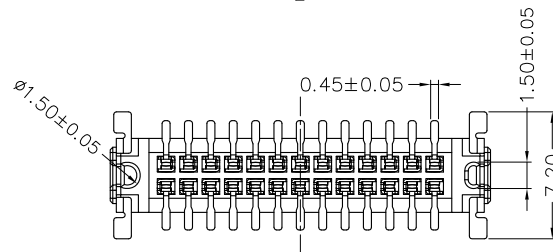
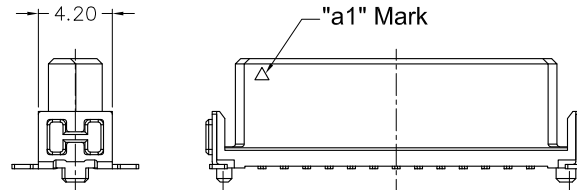
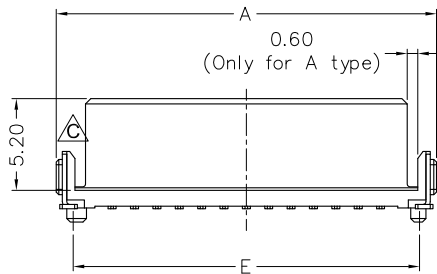


RECOMENDED PCB LAYOUT
TOLERANCE:±0.05



< ORDERING INFORMATION >

SMC02 XX X XXX 01 3

SERIES NO. _____
1.27 SMC Female Connector
Vertical SMT Type

CONTACT POSITION
SEE DIM-TABLE

STANDING HEIGHT
A: 6.25
B: 9.05
C: 13.65

PACKAGE
3: Tape & Reel
With Nozzle Cap

CONTACT PLATING
600: Selective Gold Flash Plated
(1μ" Min.)
605: 5μ" selective Gold Plated
630: 30μ" selective Gold Plated

Specification

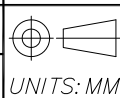
Insulator Material: High Temp. Thermoplastic, UL94V-0.
Contact Material: Phosphor Bronze.
Board Lock Material: Brass.
Contact Plating: Au on Contact Area.
Sn (100μ" Min.) on Soldertail.
Nickle (Contact-80μ" Min.
/ Soldertail-50μ" Min.)
Board Lock Plating: Sn(100μ" Min.) over Nickel (40μ" Min.)
Current Rating: 1.2A Max.
Contact Resistance: 25 Milliohms Max.
Insulator Resistance: 1000 Megohms Min.
Dielectric Withstanding: 500V AC for 1 Minute.
Operating Temperature: -55°C ~ +125°C.
Max. Processing Temp.: 230°C for 30~60 seconds.
260°C for 10 seconds.

DIM-TABLE

PIN NO.	DIM A	DIM B	DIM C	DIM D	DIM E	DIM F
10	11.43	7.10	5.08	8.10	9.50	10.07
12	12.70	8.37	6.35	9.37	10.77	11.34
16	15.24	10.91	8.89	11.91	13.31	13.88
20	17.78	13.45	11.43	14.45	15.85	16.42
24	20.32	15.99	13.97	16.99	18.39	18.96
26	21.59	17.26	15.24	18.26	19.66	20.23
30	24.13	19.80	17.78	20.80	22.20	22.77
32	25.40	21.07	19.05	22.07	23.47	24.04
40	30.48	26.15	24.13	27.15	28.55	29.12
50	36.83	32.50	30.48	33.50	34.90	35.47
68	48.26	43.93	41.91	44.93	46.33	46.90
80	55.88	51.55	49.53	52.55	53.95	54.52

REV.	DESCRIPTION	DATE
△C	Add Chamfer	2020,05,12
△B	Add "Pin No" Option	2020,02,25
△A	New Version	2019,03,19

DR.	CHK.	APP.
Shun	Ren	Peter



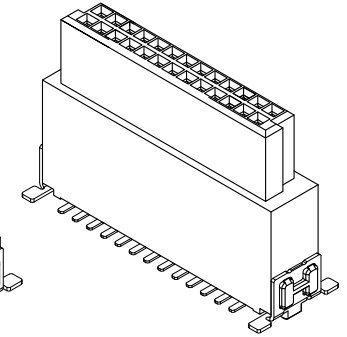
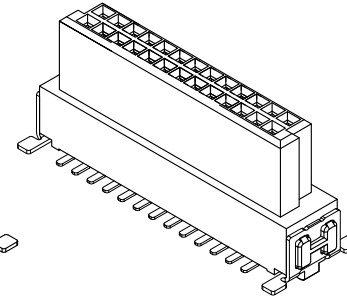
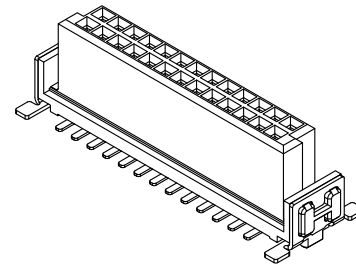
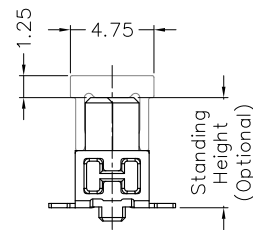
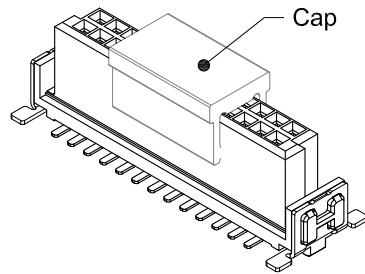
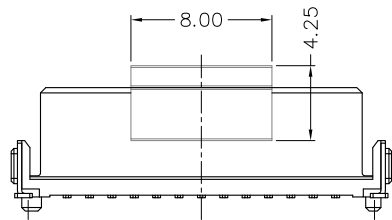
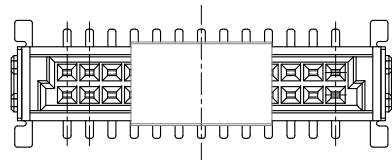
TOLERANCE
(UNLESS SPECIFIED)

0.0	±0.35
0.00	±0.20
0.000	±0.10
ANG.	±2°

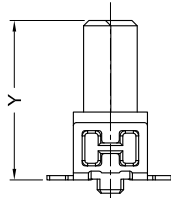
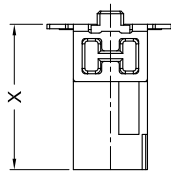


TITLE:
1.27 SMC Female Connector
Vertical SMT Type

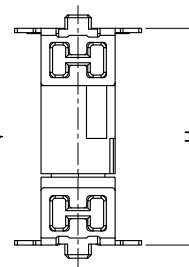
DWG NO. SMC02_C	SHEET 1 / 2
FILE PATH SMC\BTB\SMC02_CC	REV. C



< SMC04 Series >



Matting →



Connector Height		Stacking Height
X(SMC04)	Y(SMC02)	H(Matting)
6.75	6.25	8.0
	9.05	10.8
	13.65	15.4
8.25	6.25	9.5
	9.05	12.3
	13.65	16.9
9.85	6.25	11.1
	9.05	13.9
	13.65	18.5

< SMC02 Series >

REV.	DESCRIPTION	DATE
△C	Add Chamfer	2020,05,12
△B	Add "Pin No" Option	2020,02,25
△A	New Version	2019,03,19
DR. Shun	CHK. Ren	APP. Peter



TOLERANCE
(UNLESS SPECIFIED)
0.0 ±0.35
0.00 ±0.20
0.000 ±0.10
ANG. ±2°



UNICORN
ELECTRONICS
COMPONENTS

TITLE:
1.27 SMC Female Connector
Vertical SMT Type

DWG NO.
SMC02_C
FILE PATH
SMC\BTB\SMC02_CC

SHEET
2 / 2
REV.
C