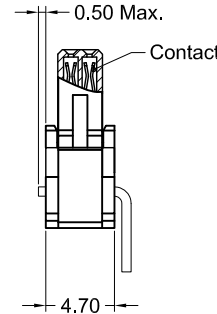
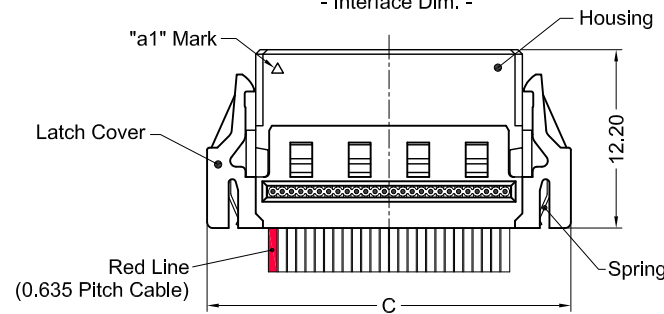
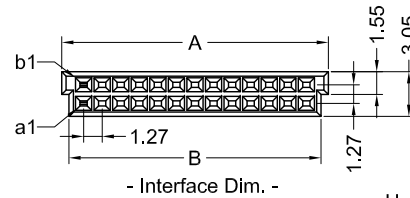


**Specification**

**< Connector >**  
 Housing Material LCP, UL94V-0.  
 Latch Cover Material PA66, UL94V-0.  
 Contact Material Copper Alloy  
 Spring Material Stainless  
 Contact Plating Au over Ni

**< Cable >**  
 Size: 30 AWG  
 Outer Diameter 0.66±0.1 mm  
 Pitch 0.635 mm  
 Material PVC or TPE  
 Max Operating Temp. -20°C ~ +105°C (PVC)  
 -40°C ~ +125°C (TPE)

**< Mechanical >**  
 Mating Force ≤0.8N (Per-Pin)  
 Separating Force ≥0.1N (Per-Pin)  
 Mating Cycle 500



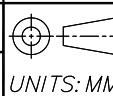
**DIM. TABLE**

PIN NO.	DIM A	DIM B	DIM C
12	9.35	8.35	16.00
16	11.89	10.89	18.54
20	14.43	13.43	21.08
26	18.24	17.24	24.89
30	20.78	19.78	27.43
32	22.05	21.05	28.70
40	27.13	26.13	33.78
50	33.48	32.48	40.13
68	44.91	43.91	51.56
80	52.53	51.53	59.18

REV.	DESCRIPTION	DATE
B	Revised	2019,03,20
A	New Version	2018,11,05

DR. Shun	CHK. Ren	APP. Peter
----------	----------	------------



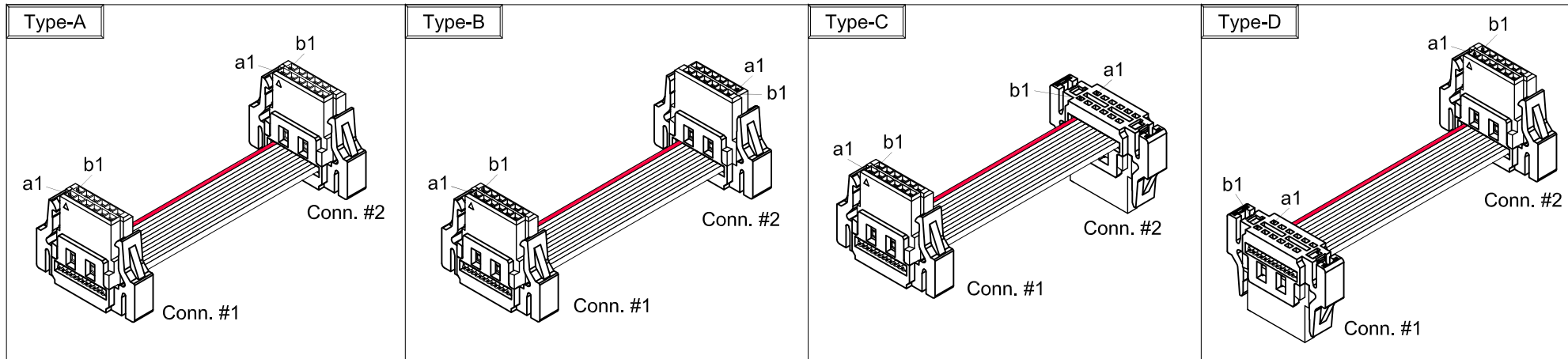
**TOLERANCE (UNLESS SPECIFIED)**  
 0.0 ±0.35  
 0.00 ±0.20  
 0.000 ±0.10  
 ANG. ±2°



**TITLE:**  
 1.27 Pitch IDC Female Cable Assembly

**DWG NO.**  
 CABSWC01\_C  
**FILE PATH**  
 SMC\WTB\CABSWC01\_CB

**SHEET**  
 1 / 2  
**REV.**  
 B



< ORDERING INFORMATION >

CAB SWC01 XX XXXX X X 600 0

Connector Series  
 IDC Female Connector  
 For 0.635 pitch flat cable

Contact Pos.  
 See DIM. TABLE

Cable Length  
 EX.  
 0530: 530mm  
 1000: 1000mm

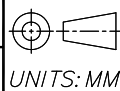
Package  
 0: Bag

Plating  
 600: Selective Gold Flash (1μ" Min.) Plated.  
 615: Selective Gold Flash (15μ" Min.) Plated.  
 630: 30μ" selective Gold Plated.

Connection Type  
 A,B,C....(See Drawing)

Cable Material  
 1: PVC  
 2: TPE

REV.	DESCRIPTION	DATE
DR. Shun	CHK. Ren	APP. Peter
⚠	Revised	2019,03,20
⚠	New Version	2018,11,05



TOLERANCE  
 (UNLESS SPECIFIED)  
 0.0 ±0.35  
 0.00 ±0.20  
 0.000 ±0.10  
 ANG. ±2°



TITLE:  
 1.27 Pitch IDC Female Cable Assembly

DWG NO.  
 CABSWC01\_C  
 FILE PATH  
 SMC\WTB\CABSWC01\_CB

SHEET  
 2 / 2  
 REV.  
 B